

LIMOUSINE



KONGO Pp

ZIL 396

born: 16.11.2017

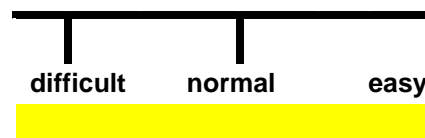
breeder: Deibel Robert, Feuchtwangen

PEDIGREE

TST KANOS PP
289837
TUNIKA
DE 986452306

TST KANT P
TST Emsa
Valseur MN
Tussi P

CALVING



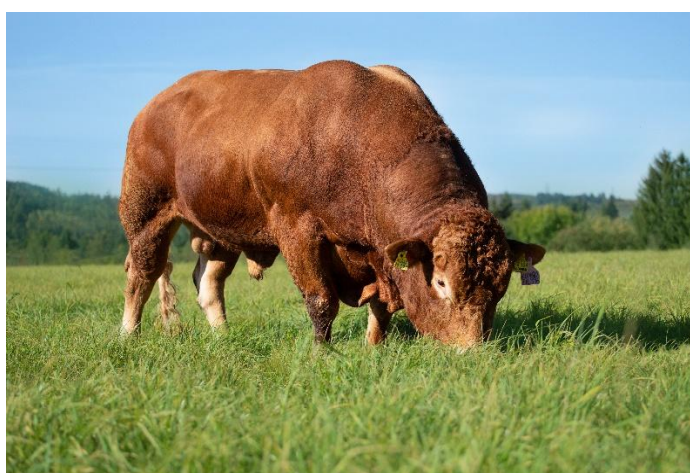
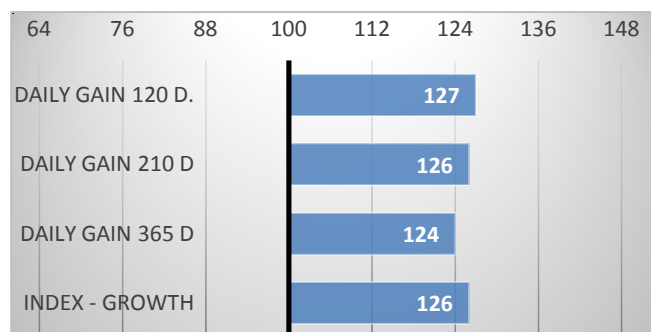
RELATIVE BREEDING VALUES - CZE

12/2023

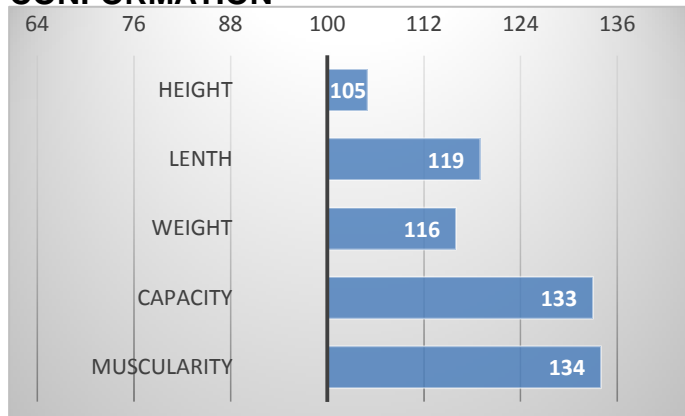
GROWTH

CALVES 18

HERDS 4



CONFORMATION



Kongo comes from German Mr. Diebl's breeding.

He offers outcross with combination of German and French genetics (mother's father is Frech Valseur).

PERFORMANCE TEST

weight 120 d	-	kg
weight 210 d.	-	kg
weight 365 d	-	kg
daily gain in test	-	g
daily g. since birth	-	g

EXTERIOR EVALUATION

Frame			Body capacity			Muscularity			Breeding type	Total
VT	DT	HM	PŠ	HH	DZ	PL	HŘ	ZÁ		
6	7	8	7	7	7	7	7	7	7	70

acronymes: VT - height , DT - length, HM - weight, PŠ - chest width, HH - chest depth, DZ - pelvis length, PL - shoulder, HŘ - top line, ZÁ - Thigs

POLLED EASY CALVING GERMAN-FRENCH PEDIGREE