

GALLOWAY

KASS

ZGA 401



born: 6.4.2009

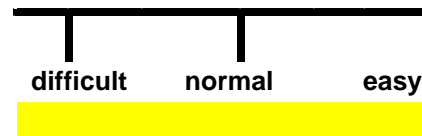
breeder: Greiner Juergen, Hagen

PEDIGREE

KASS_12 F Solway
271428
VIOLA I64 Holsten
113264164 DE

SOLWAY Daniel 7D
SOLWAY Kareem 10A
BONNI ILM
VIOLA D50 Holsten

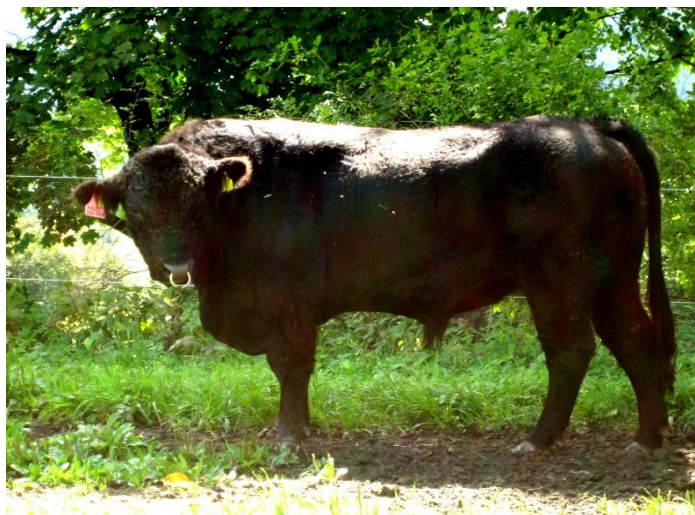
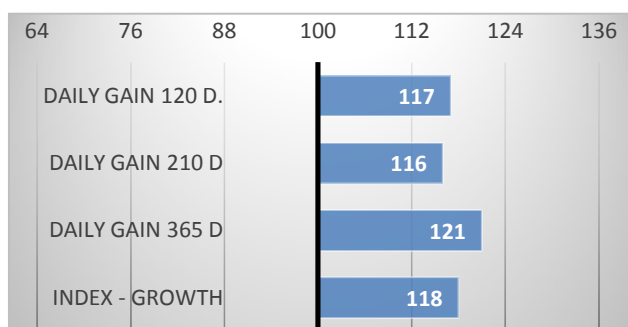
CALVING



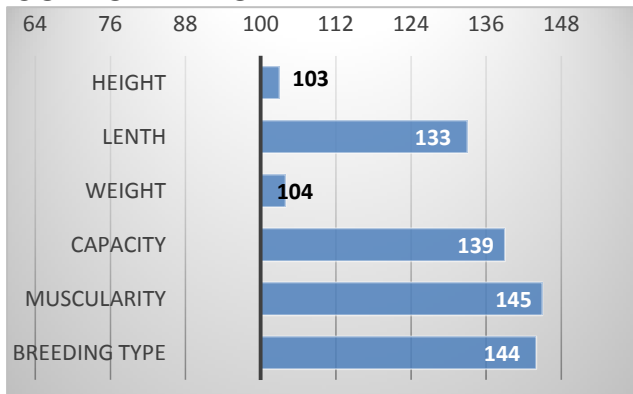
RELATIVE BREEDING VALUES - CZE 9/2023

GROWTH

CALVES 18 HERDS 3



CONFORMATION



EXTERIOR EVALUATION

Frame			Body capacity			Muscularity			Breeding type	Total
VT	DT	HM	PŠ	HH	DZ	PL	HŘ	ZÁ		
10	7	7	6	6	7	6	6	7	7	69

acronymes: VT - height , DT - length, HM - weight, PŠ - chest width, HH - chest depth, DZ - pelvis length, PL - shoulder, HŘ - top line, ZÁ - Thigs

PERFORMANCE TEST

weight 120 d	-- kg
weight 210 d.	0 kg
weight 365 d	0 kg
daily gain in test	0 g
daily g. since birth	0 g