

AUBRAC



USSE

ZAU 009

born: 24.3.2011

breeder: Montážně obchodní firma s.r.o., B.Mlýn

PEDIGREE

DALLAS

ZAU 002

PRUSSE

1207046948

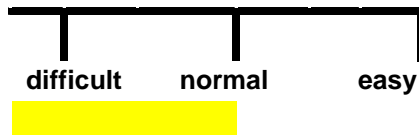
Andalous

Binouse

SORBIER

FR 1298035236

CALVING



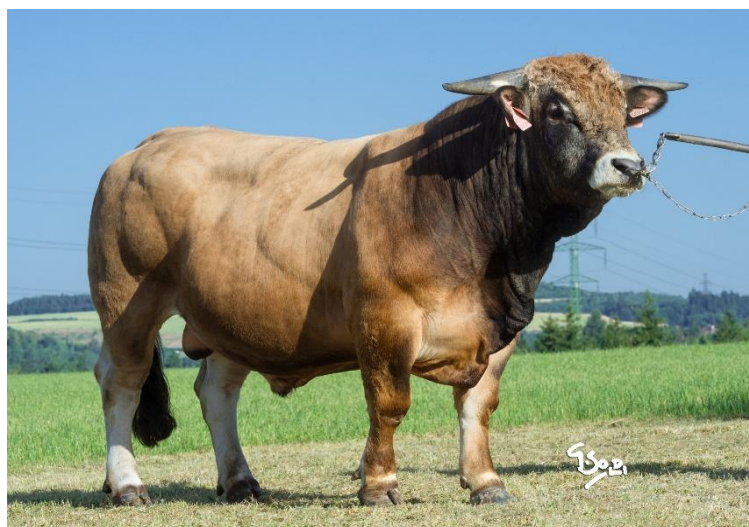
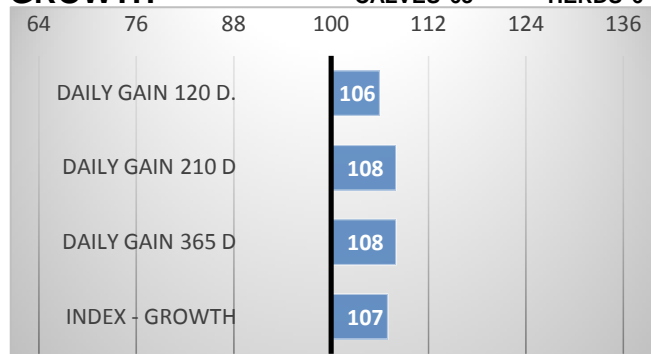
RELATIVE BREEDING VALUES - CZE

9/2023

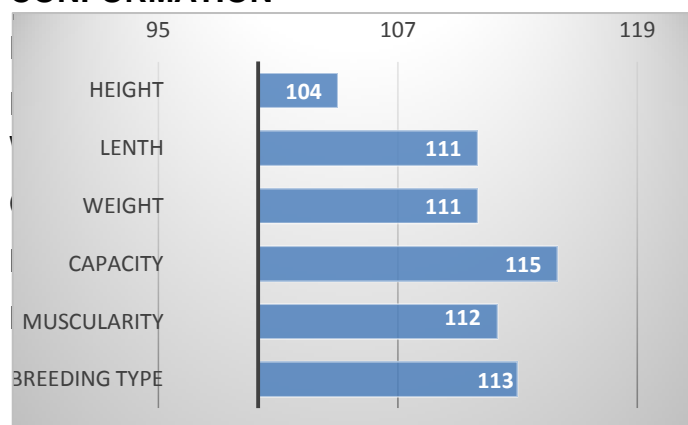
GROWTH

CALVES 63

HERDS 6



CONFORMATION



Usse is a typical representat of Aubrac cattle. He is deep, with lot of capacity and his weight in 365 days was 553 kg.

We expect progeny of good growth.

The development of the Aubrac breed started during the 17th century at the Benedictine Abbey of Aubrac, in the South of the central Massif in France. The Aubrac is a well muscled medium sized cattle.

EXTERIOR EVALUATION

Frame			Body capacity			Muscularity			Breeding type	Total
VT	DT	HM	PŠ	HH	DZ	PL	HŘ	ZÁ		
9	7	10	7	8	7	6	7	6	7	74

acronymes: VT - height , DT - length, HM - weight, PŠ - chest width, HH - chest depth, DZ - pelvis length, PL - shoulder, HŘ - top line, ZÁ - Thigs

PERFORMANCE TEST

weight 120 d	221 kg
weight 210 d.	327 kg
weight 365 d	553 kg
daily gain in test	-- g
daily g. since birth	1400 g

DEEP CHEST, CAPACITY, WEIGHT

GROWTH